

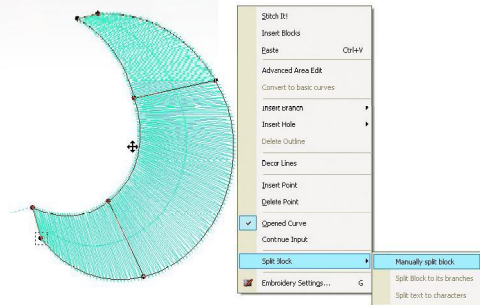
EOS V3 CREATOR Plus



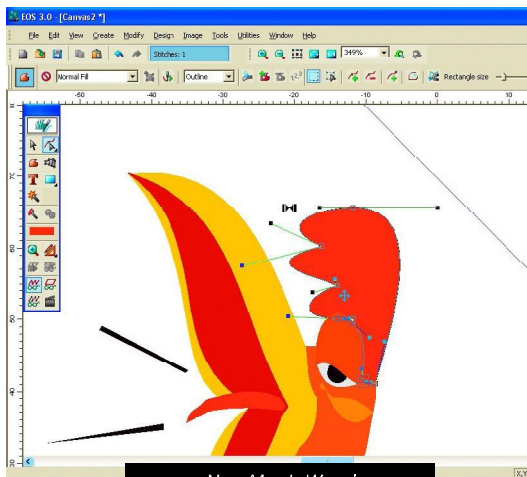
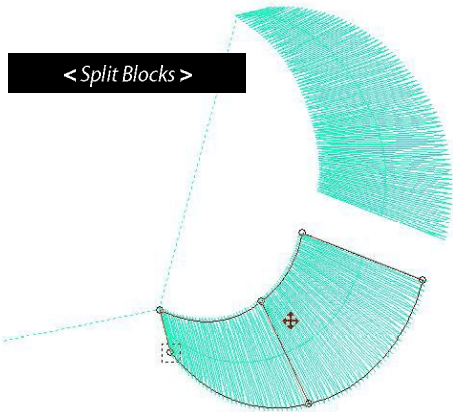
NEW
V3
NEW NEW NEW NEW NEW NEW NEW NEW

hyperfor
erfont hyperf
tunartfont

< TrueType Conversion >



< Split Blocks >



< New Magic Wand >

NEW! All Inclusive Design Format

- The Compucon design format, .ERF, stands for Embroidery Rich Format. This single file includes the condensed design, the stitch design and the artwork file.

NEW! Digitizing Tool

- Free Form. This tool is used in multiple ways. Create a running stitch, column stitch, Step Satin fill area, appliqué, cross-stitch fill, or chenille. This all-inclusive tool uses Recipes to create many different types of blocks with one tool.

NEW! Bezier Curves

- Now you can digitize with Bezier points or the curve / corner points method.

NEW! Block List

- Use the block list to reorder blocks, changing colors and selecting areas of a design.

NEW! Split Block

- Use this tool to split up a block of stitches for easier editing.

NEW! Compucon Lettering Styles

- 140 Font styles to choose from and 11 lettering frames
- Autokerning to ensure perfect letter placement
- Multiple font styles on separate lines.

NEW! True Type Font Conversion

- Convert True Type fonts to embroidery fonts in Satin and Step Satin Stitches.

NEW! Image Formats

- EMF, BMP, TIFF, JPG, PCX, PCD, TGA, PSD, WMF, EPS, CDR (V4,5,6).
- EMF and WMF vector formats read exact Bezier points as originally created.

NEW! Special Stitch Types

- 222 Pattern Step Fills
- 443 Motif Fills
- 109 Elastic Fills.

NEW! Variable Density Fill

- Used with Normal Fill, this feature allows you to create a degrade fill useful for color blending.

NEW! Magic Wand

- Automatic recognition of a block outline: the Magic Wand immediately places points around an area for fast digitizing.

NEW! Smart Edges

- Smart Edges will automatically place points on an outline as you digitize an area.

Experience the **COMPUCON** difference.

HEADQUARTERS

9th km Thessaloniki / Thermi road, P.O. Box: 445, 57001 Thermi, Thessaloniki, Greece, Tel: +30 2310 490300, Fax: +30 2310 490399, info@compucon.gr, www.compucon.gr

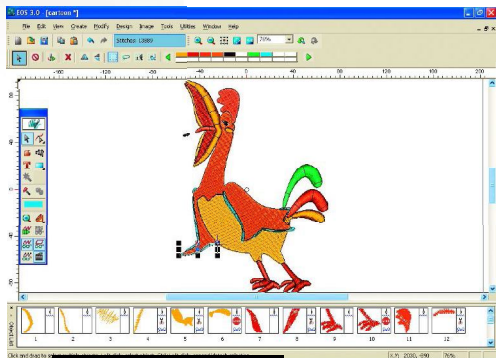
COMPUCON U.S.A.

620 Green Valley Road, Suite 103, Greensboro NC 27408, Tel: 336-294-0604, Fax: 336-854-2233, info@compuconusa.com, www.compuconusa.com

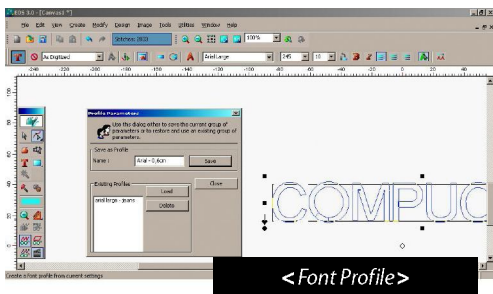
EOS V3 MODIFIER Plus

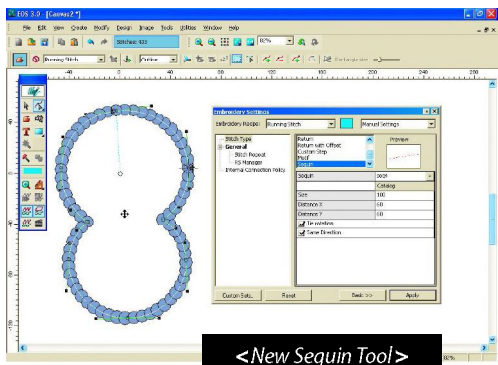


NEW V3

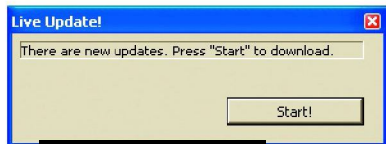


<Block List>

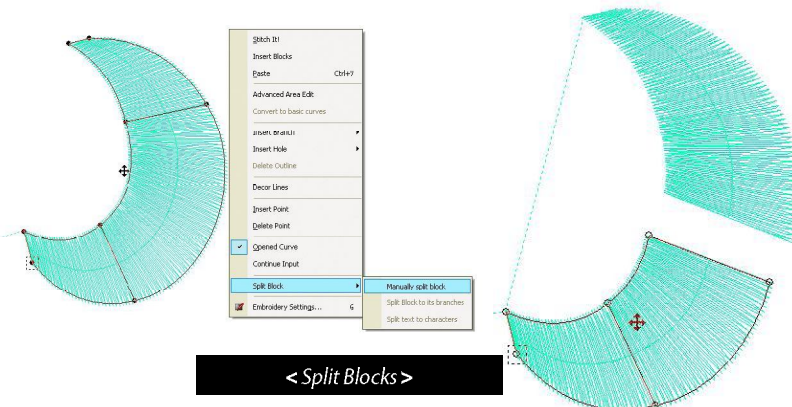




<New Sequin Tool>



<Live Update>



<Split Blocks>

NEW! All Inclusive Design Format

- The Compucon design format, .ERF, stands for Embroidery Rich Format. This single file includes the condensed design, the stitch design and the artwork file.

NEW! Block List

- Use the block list to reorder blocks, changing colors and selecting areas of a design.

NEW! Split Block

- Use this tool to split up a block of stitches for easier editing.

NEW! Compucon Lettering Styles

- 140 font styles to choose from and 11 lettering frames
- Autokerning to ensure perfect letter placement
- Multiple font styles on separate lines.

NEW! Read and Write Popular Home Formats

- Read / Write .PES, .PEC, .SEW, .HUS, .PCS

NEW! Export as Windows Metafile

- This feature will export a realistic view of your design as a WMF file that can be viewed by your customers.

NEW! Show Guidelines

- Use onscreen guidelines for alignment of your designs and lettering.

NEW! Font Profiles

- Save your most popular lettering settings as Font Profiles for future use.

NEW! Special Stitch Types

- 222 Pattern Step Fills
- 443 Motif Fills
- 109 Elastic Fills.

NEW! Sequin and E-Stitch

- Create a Sequin design and E-Stitches (need a sequin machine for this function).

NEW! Customizable Toolbars

- Create your own toolbars of the functions you use on a daily basis.

NEW! Live Update

- With an Internet connection, you will be able to perform a Live Update at any time to make sure that you are running the most current version of software

E2K41823-02

© COMPUCON 2007. COMPUCON Graphic Design Department. All accompanying logos, brands and product names are trademarks of their respective companies



Experience the COMPUCON difference.

HEADQUARTERS

9th km Thessaloniki / Thermi road, P.O. Box: 445, 57001 Thermi, Thessaloniki, Greece, Tel: +30 2310 490300, Fax: +30 2310 490399, info@compucon.gr, www.compucon.gr

COMPUCON U.S.A.

620 Green Valley Road, Suite 103, Greensboro NC 27408, Tel: 336-294-0604, Fax: 336-854-2233, info@compuconusa.com, www.compuconusa.com

EOS V3 PROFESSIONAL Elite



NEW V3

NEW! Fully Optimized Work Environment

- Easy handling of embroidery and graphic objects with a large variety of tools for viewing your design- mouse-wheel activated scroll or zoom, auto-pan on screen, zoom history and navigator plus many more!

NEW! All Inclusive Design Format

- The Compucon design format, .ERF, stands for Embroidery Rich Format. This single file includes the condensed design, the stitch design and the artwork file.

NEW! Digitizing Tools

- Free Form. Create a running stitch, column stitch, step satin fill area, appliqué, cross-stitch fill or chenille. This all-inclusive tool uses Embroidery Recipes to create many different types of blocks with one tool.
- Column Fill with Holes. Create turning fills and insert holes without needing to digitize multiple blocks.

NEW! Bezier Curves

- Now you can digitize with Bezier points or the curve / corner points method.

NEW! Block List

- Use the block list to reorder blocks, changing colors, and selecting areas of a design.

NEW! Split Block

- Use this tool to split up a block of stitches for easier editing.

NEW! Compucon Lettering Styles

- 160 font styles to choose from and 30 Lettering frames and auto-kerning to ensure perfect letter placement.
- Many NEW monogram specific lettering styles.
- Using the embroidery recipe concept, create fonts with any kind of fill stitch: satin line, appliqué, chenille and even longitudinal. With such a large collection of fonts, the possibilities and combinations are infinite on pre-digitized and True Type fonts!

NEW! Image Formats

- EMF, BMP, TIFF, JPG, PCX, PCD, TGA, PSD, WMF, EPS, CDR (V4,5,6).
- EMF and WMF vector formats read exact Bezier points as originally created.
- Import as many bitmap or vector images as you like into the same background, then edit them in the graphic layer.

NEW! Color Blending Tool

- Select two colors and tell EOS to "Blend" and a blended fill will be created.

NEW! Merge Blocks

- Avoid overlapping between blocks with common characteristics – just merge them together!

NEW! SQL Database

- An SQL database with real networking capabilities.

NEW! Elastic Outlines

- Adjust your outlines while digitizing. No more editing outlines only at given points – just select and edit at any desired point on the curve, greatly reducing the time needed to input and edit outlines.

NEW! Advanced Satin Mode

- Create a column stitch and edit the width of the satin along the line.

NEW! Spiral Fill and Wave Column

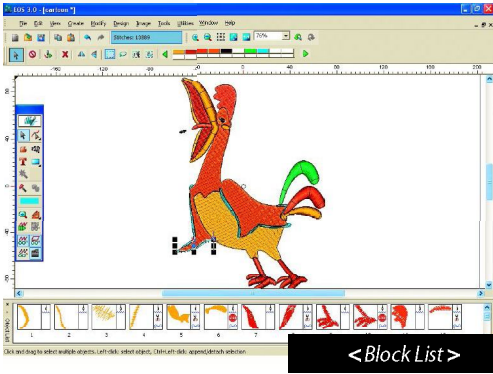
- New fill stitches to fill areas: Spiral in a spiral motion and Wave in a curved and decorative effect

NEW! Snap to Grid

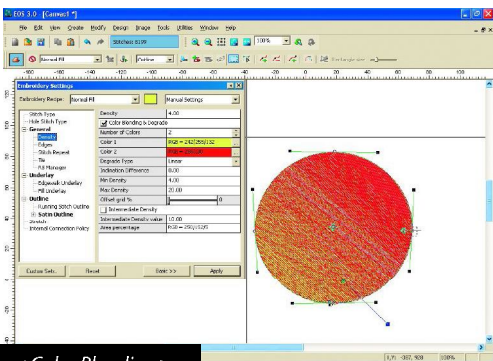
- Use a Grid or Guideline and snap lettering or a design to the line.

NEW! Advanced Area Edit

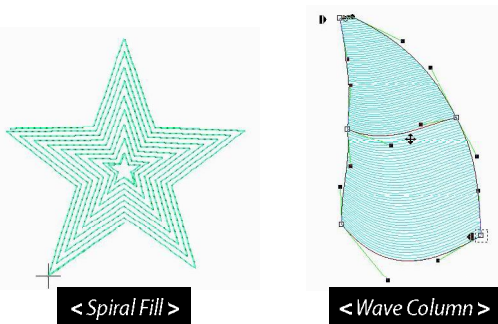
- This function allows you to treat an underlay or auto-outline separately from the rest of the block.
- Apply push and pull compensation on either side of a block or on both sides.



<Block List>



<Color Blending>



<Spiral Fill>

<Wave Column>

Experience the COMPUCON difference.

HEADQUARTERS

9th km Thessaloniki / Thermi road, P.O. Box: 445, 57001 Thermi, Thessaloniki, Greece, Tel: +30 2310 490300, Fax: +30 2310 490399, info@compucon.gr, www.compucon.gr

COMPUCON U.S.A.

620 Green Valley Road, Suite 103, Greensboro NC 27408, Tel: 336-294-0604, Fax: 336-854-2233, info@compuconusa.com, www.compuconusa.com

